



What the Director of Education says about our school ... "I visited the school to see first-hand the fabulous work they do to include, to engage, and to help every child succeed. Cheadle Heath lives our Stockport Family values every day and at Cheadle Heath SEND is everyone's business." March 2023

12th January 2024

Issue 11



SEND HEADLINE

Happy New Year 2024

I AM -

Welcome back to school and a HAPPY NEW 2024 to you all! It feels like an age since we were singing Christmas songs, but now we are back to school, normality and routine and all struggling to remember to write the date correctly! It's been wonderful to see so many smiling faces returning to school. December is always an incredibly busy month in school with concerts to rehearse and perform, Christmas parties and celebrations to attend and of course learning carrying on in lessons. As we start the New Year, a time when traditionally it is a chance to reflect and make resolutions, I would like to extend a personal thank you to all of Cheadle Heath Primary's families and friends who have supported us so far this academic year. Without all of your input and support the school would not be such a wonderful and vibrant place. I say this often, but your support is really appreciated. Cheadle Heath Primary is an amazing school and I am very proud of our achievements but it really is a team effort. Here's to a new year and an exciting term ahead!

BECAUSE WE ARE

New term, new focus

As key stakeholders, we are keen to engage parents in school strategic evaluation and improvement processes. As a team, we want this to be meaningful and purposeful and we recognise that the Cheadle Heath Voice is not fulfilling this. As a result, we are changing how we gather your views. Instead of the Voice, each half term we will seek your views on a different aspect of school life via a school spider survey. Your feedback will help inform our self-evaluation processes.

Our focus this term is on **Writing**. We are monitoring the standards of, and provision for, writing across the school which includes evaluating the standards of writing, observing writing sessions, asking pupils questions about their views on writing and moderating samples of writing with other schools in the Edgeley cluster. The information that you provide will help us to holistically evaluate writing and pinpoint our next steps. This half term's survey will go live on school spider next week so please do fill it in.

Cost of Living Crisis

With the cost of living crisis and winter many of us are beginning to struggle more than we have before. As part of the Cheadle Heath family we want everyone to know that they are not alone. With the help of our community we can signpost you to places and ideas which will support you and your families. We are also here help on a more individual basis if you need us please contact me through the office on 0161 428 2476.

Cheadle Heath Primary School

What the Director of Education says about our school ... "I visited the school to see first-hand the fabulous work they do to include, to engage, and to help every child succeed. Cheadle Heath lives our Stockport Family values every day and at Cheadle Heath SEND is everyone's business." March 2023

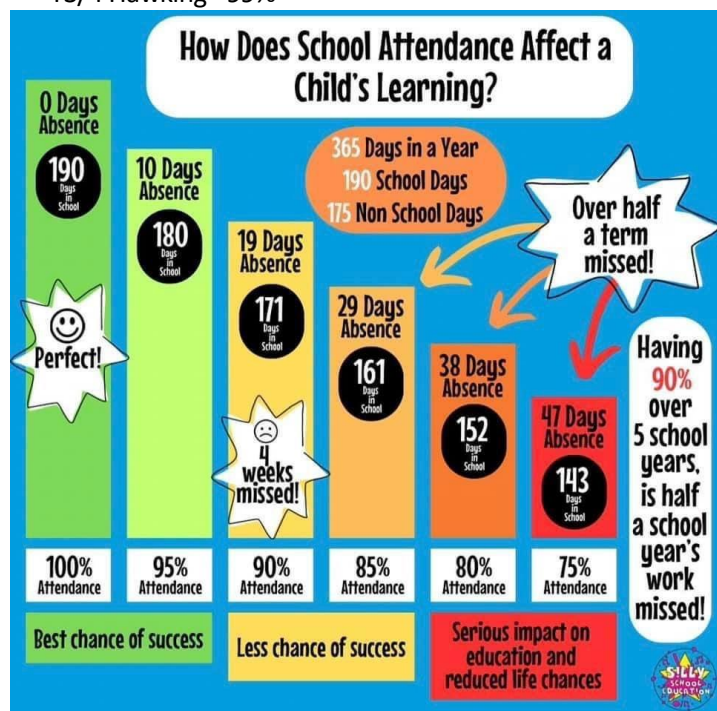
Attendance Matters

Thank you to everyone for making the extra effort to be in school on time every day last term. Please remember school opens at 8.40am and gates and doors close at 8.50am. If your child arrives after 8.50am this is counted as them being late. We do record a reason for lateness and will ask you or your child to give one. This week there have been 27 L (late) codes and 8 U (unauthorised) codes recorded. It is so important to be on time so children don't miss out on the very start of the day, register & their early morning 'Do Now' tasks.

We understand children can be unwell and know that this can cause fluctuations in their attendance. This is why we will be celebrating not just those that get over 97% but also those whose attendance improves over time even if they don't make 97% in our half termly raffle draws. We are following Government Guidelines for our policy and procedures and want to work with families to support your child's attendance. If you have any concerns, please get in touch.

Classes with Attendance Over 96% This Week:

- Reception's Einstein & Nightingale with a magical 100%!
- Y1 Mandela – 98%
- Y3/4 Hawking - 99%



From Rags 2 Riches

We have signed up to the Rags2Riches4Schools recycling scheme, to help others around the world benefit from our good quality unwanted clothes and shoes. Our collection is scheduled for **Thursday 7th February 2024** and bag(s) can be returned to the school from after school on Wednesday 6th February. You can help us to help others and raise for school. Even if it's only one t-shirt please bring it in, as it will all help. If you can involve family, friends and neighbours. Thank you for your continuing support.

News from our caterers, Dolce

We have been informed by Dolce, our school catering provider, that from 1st April 2024, the price of a school meal will rise from £2.54 to £2.78. Nursery paid meals are increasing from £2.17 to £2.38. Reminders:

- Dolce only allow a pupil's account to fall into debt by three meals. This means that if school meals are in debt, a child will not be able to have a school meal until the debt is cleared and a packed lunch will have to be brought into school.
- Please pre-order school meals to ensure your child has a meal they enjoy at lunchtime. If you pre-order and they arrive to school late they will still be guaranteed their choice. You can pre-order daily, weekly or half termly from home. The school office team are more than happy to help you use Live Kitchen.
- Are you (or could you be) eligible for free school meals? [Click here](#) to check eligibility criteria & apply or contact SBM Mrs Topping who can check for you.

Family Night.. 02.02.24

Tickets will soon be available for this amazing family event:



Staffing News & Updates

- Welcome to Mrs. Staniforth who has taken up a new post in Nursery this week. Mrs Staniforth has a wealth of experience and her enthusiasm for teaching in the early years really shines.
- We are looking forward to Mrs Dyson returning to work after February half term. Mrs Dyson will be job sharing with Mrs Murphy in Parks Class. I sincerely thank Mrs. Neville-Millican for her flexibility and commitment to covering the maternity leave and wish her every success as she moves to Lancaster to be nearer her family roots. Thank you and GOOD LUCK in your new adventure!

Have a great weekend & stay warm

Christine Meekley & the staff at #teamCHPS

Cheadle Heath Primary School

What the Director of Education says about our school ... "I visited the school to see first-hand the fabulous work they do to include, to engage, and to help every child succeed. Cheadle Heath lives our Stockport Family values every day and at Cheadle Heath SEND is everyone's business." March 2023

Key Dates for Spring Term 2024: Monday 8th January – Thursday 28th March

Monday 15 th January	No swimming today for Seacole Class due to entrance exams taking place at CHS
Thursday 18 th January	CHSP Voice CANCELLED – see new way of gathering views above (new term, new focus) Flu revisit for any pupils who missed the session in autumn term
Monday 22 nd January	Y2 to Manchester Airport
Monday 29 th January	Y6 pupils to Chill Factore (letters have been distributed to those selected)
Wednesday 31 st January	Full Governing Board Meeting 3/6
Friday 2 nd February	Family Night with Chris Mitchell 6.30 – 8.30pm
w/b Monday 5 th February	Stay & Learn Computing with Me – times to be arranged by individual class teachers
Tuesday 6 th February	Big Computing Day led by Mrs Mason-Singh
Wednesday 7 th February	Rags2Riches clothes collection – details to follow
Thursday 8 th February	Y6 to Chester Zoo

Half Term Holidays: Monday 12th February – Friday 16th February 2024

Monday 19 th February	INSET 3 / 5 – Staff only in school
Tuesday 20 th February	EYFS Stay & Play – Reception 8.45 – 9.45am / Nursery 2.15pm – 3.15pm
Thursday 21 st March	Big RE Day Y3/4 to All Hallows Church to the Easter Trail
Thursday 29 th February	UKS2 football tournament at Stockport Academy
Tuesday 5 th March	KS2 SATs meeting for Y6 parents 5pm
Thursday 7 th March	World Book Day World Book Day Immersive Storytelling with Miss Shelmerdine
Friday 8 th March	U11s Y6 footballers @ Manchester City Football Academy Festival
w/b Monday 11 th March	Science Week: Time! There will science themed nights at Sunset Club this week so book your places early
Tuesday 12 th March	Stay & Learn Science with Me – times to be arranged by individual class teachers
Thursday 14 th March	Parks Class (Y3/4) netball match v Lark Hill Primary D-I-S-C-O fever time again
Tuesday 19 th March	KS2 Netball festival at Stockport Academy 3.45 – 5.15pm
Wednesday 20 th March	Y5 to Cheadle Hulme School – Music Outreach Concert
Thursday 21 st March	Big RE Day Y3/4 to All Hallows Church for the Easter Storytrail
Tuesday 26 th March	Parents' Evening until 6pm
Wednesday 27 th March	Parents' Evening until 6pm
Thursday 28 th March	EYFS & KS1 Easter Bonnet Parade – 2.15pm in the playground End of the Spring term. School closes at 3.15pm for the Easter Holidays. Full Governing Board Meeting 4/6 at 4pm

Easter Holidays: Friday 29th March – Friday 12th April 2024

Tuesday 16 th April	EYFS Stay & Play – Reception 8.45 – 9.45am / Nursery 2.15pm – 3.15pm
Wednesday 17 th April	LKS2 Football @ Stockport Academy
Thursday 18 th April	CHPS Voice – 2pm
Friday 19 th April	KS2 Cross Country 3.45pm
Monday 6 th May	Bank Holiday Monday – school closed
w/b Monday 13 th May	Year 6 SATs
Wednesday 15 th May	Full Governing Board Meeting 5/6 at 4pm

Reading at Home with your Child

Reading with your child at home is vitally important to ensure that they are developing their understanding of the world, improving their reading skills, whilst also promoting a love of reading. Sometimes it can be hard to find the time, but research suggests that reading aloud to children or children reading aloud to an adult, even if only for a short time each day, develops their language skills, as well as enhancing their love of literature. The information below contains ideas and questions that you might use to support your child's reading at home.

Why is reading so important?

- Books provide good models of language.
- Reading develops the imagination.
- Exploring a variety of texts develops our pupils' vocabulary.
- Reading helps to explore life beyond a child's immediate experiences.
- Reading can help a child to develop their own story telling skills.

How can you support your child with their reading at home?

- Ensure your child reads **at least FIVE times a week**, and sign their reading record (if they have one) when they have read.
- Children enjoy hearing the same stories, however it is useful to explore a wide range of books. Children often like the repetition of familiar stories. These are fine but try to explore other stories too.
- When looking at a book, decide whether you are going to **read** the story or **talk about the book**.
- When **you read**, encourage the child to sit and listen. It is good for a child to hear a story read to them slightly above their reading ability, to develop their vocabulary and understanding of more advanced texts.
- When your **child reads**, check that he/she has understood the story. When learning to read it is sometimes hard to work out what each word says and means. Once your child gets to the end of a difficult page ask them to read it again or you could read it so they can understand it. Check your **child's understanding** at the end by asking your child to tell you about the story by summarising key events.
- Ask your child if there is anything in the story they did not understand.
- Encourage your child to talk about the story and give reasons why they liked/disliked it.
- Repeat back words and sentences they use correctly so your child hears good examples. Sometimes add one more detail or an idea to develop his/her language acquisition.
- Check that your child knows what the words mean. Explain difficult words and show your child how to use words by giving examples of sentences.
- Exploring and using vocabulary. Ask your child to write down any new words they come across and try to use them in a sentence.
- Encourage your child to sequence the ideas and events in the story in the correct order.
- Encourage your child to describe objects and people, adding details and extra information. This will help to develop your child's vocabulary.

What types of questions should I be asking my child?

Asking questions is really important to developing understanding and vocabulary. Ask a few questions at different points of the book; however, try to let your child lead the conversation about the book. **Don't open the book and ask lots of questions!**

Cheadle Heath Primary School

What the Director of Education says about our school ... "I visited the school to see first-hand the fabulous work they do to include, to engage, and to help every child succeed. Cheadle Heath lives our Stockport Family values every day and at Cheadle Heath SEND is everyone's business." March 2023

Term dates 2023 – 24

	School starts on the morning of:	School finishes at the end of the day on:
Autumn 1	Tuesday 5 th September 2023	Friday 20 th October 2023
Autumn 2	Monday 30 th October 2023	Thursday 21 st December 2023
Spring 1	Monday 8 th January 2024	Friday 9 th February 2024
Spring 2	Tuesday 20 th February 2024	Thursday 28 th March 2024
Summer 1	Monday 15 th April 2024	Friday 24 th May 2024
Summer 2	Monday 10 th June 2024	Friday 26 th July 2024
INSET days Staff only in attendance	<ol style="list-style-type: none"> 1 Monday 4th September 2023 2 Friday 22nd December 2023 3 Monday 19th February 2024 4 Monday 29th July 2024 5 Tuesday 30th July 2024 	

Term dates 2024 – 25

	School starts on the morning of:	School finishes at the end of the day on:
Autumn 1	Tuesday 3 rd September 2024	Friday 18 th October 2024
Autumn 2	Tuesday 29 th October 2024	Thursday 19 th December 2024
Spring 1	Monday 6 th January 2025	Friday 14 th February 2025
Spring 2	Tuesday 25 th February 2025	Friday 11 th April 2025
Summer 1	Monday 28 th April 2025	Friday 23 rd May 2025
Summer 2	Monday 9 th June 2025	Friday 25 th July 2025
INSET days Staff only in attendance	<ol style="list-style-type: none"> 1 Monday 2nd September 2024 2 Monday 28th October 2024 3 Thursday 2nd January 2025 4 Friday 3rd January 2025 5 Monday 24th February 2025 	